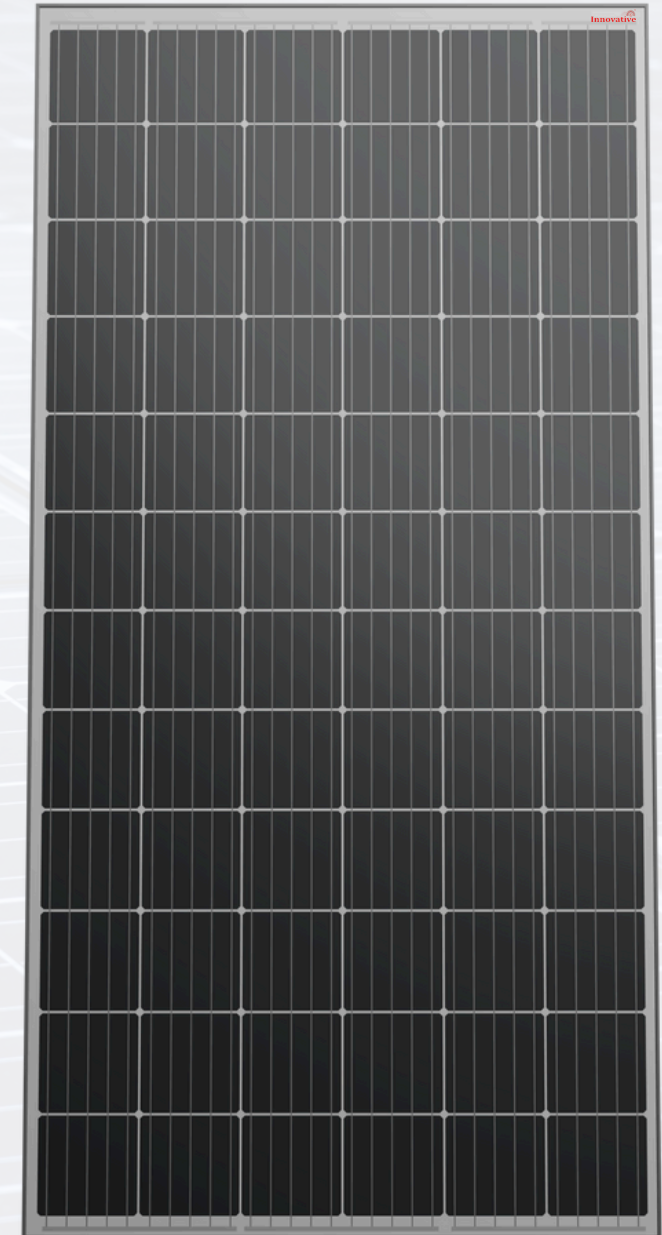


# MONO-CRYSTALLINE INNOVAMAX



[www.innovativesolarsolutions.in](http://www.innovativesolarsolutions.in)



MSME  
MINISTRY OF MICRO, SMALL & MEDIUM ENTERPRISES



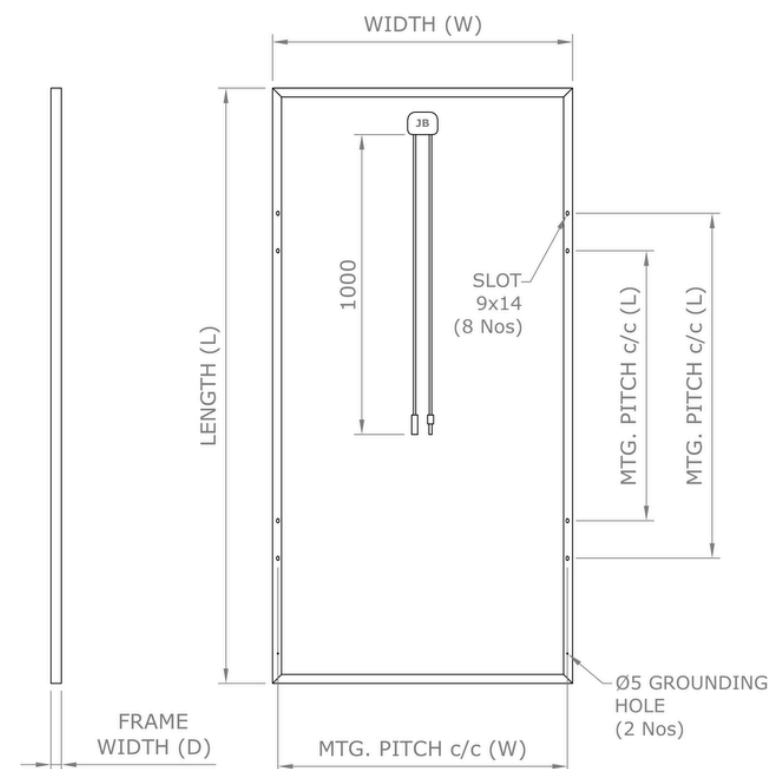
## Models INV-M-24-400Wp & INV-M-24-410Wp

Electrical Characteristics	INV-M-24-400Wp	INV-M-24-410Wp
Peak Power, Pmax (Wp)	410	410
Open Circuit Voltage, Voc (V)	49.24	49.24
Short Circuit Current, Isc (A)	10.12	10.27
Voltage at maximum power, Vmp (V)	41.70	41.70
Current at maximum power, Imp (A)	9.60	9.85
Maximum System Voltage (Vdc)	1500V	1500V
Maximum Efficiency (%)	20.15	20.65

STC: 1000 W/ M2 IRRADIANCE, 25°C CELL TEMPERATURE, AM 1.5G SPECTRUM

Mechanical Characteristics	INV-M-24-400Wp	INV-M-24-410Wp
L x W x D - (mm)	1985 x 1000 x 35	1985 x 1000 x 35
Mounting Hole Pitch (L) - (mm)	1150/900	1150/900
Mounting Hole Pitch (W) - (mm)	966	966
Weight - (Kg)	20.40	20.40
Cells Per Module	72	72
Cell Type	Mono-Crystalline	Mono-Crystalline
Front Cover (Material/ Thickness)	Tempered & Low Iron Glass, 3.2 mm	Tempered & Low Iron Glass, 3.2 mm
Encapsulant	Ethylene Vinyl Acetate	Ethylene Vinyl Acetate
Frame	Anodized Aluminium Alloy	Anodized Aluminium Alloy
Junction Box	IP 68/Weatherproof PPO	IP 68/Weatherproof PPO
Number of Bypass Diodes	3	3
Connectors	MC4	MC4
Cable (m)	1	1

## Mounting Details



## Other characteristics:

### Temperature Co-efficients:

Current [ $\alpha$ ] (A)	:	0.042 %/°C
Voltage [ $\beta$ ] (V)	:	-0.35 %/ °C
Power [ $\gamma$ ] (W)	:	-0.36 %/°C
NOCT	:	45°C $\pm$ 2°C
Temperature Range	:	-40°C to + 85°C
Maximum Power Tolerance	:	$\pm$ 2%

## Warranty:

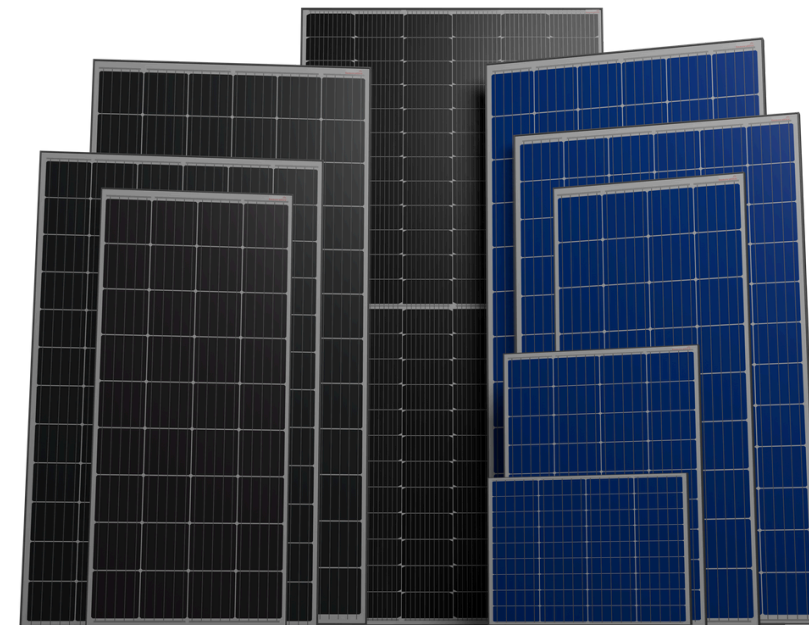
Product: 10 Years.

Performance: 25 Years (10% of power output for first 10 years and 80% of the power output at the end of 25<sup>th</sup> year.)

## Other points to note:

\*As we continuously innovate, research, and improve our products, the specifications in this product information sheet may change without prior notice. Please follow the installation instructions. For more details on approved installation, refer to the installation manual or contact the technical service department.

\*Please note that the images in this brochure are for illustrative purposes only. The actual product may differ in appearance.



102, C' Shed, 2nd Main Road, Machohalli, Bapagrama, Bengaluru,  
Karnataka 560091

Ph: +91 63649 25204/ +91 63649 25205

Web: [www.innovativesolarsolutions.in](http://www.innovativesolarsolutions.in)

Mail: [info@innovativesolarsolutions.in](mailto:info@innovativesolarsolutions.in)